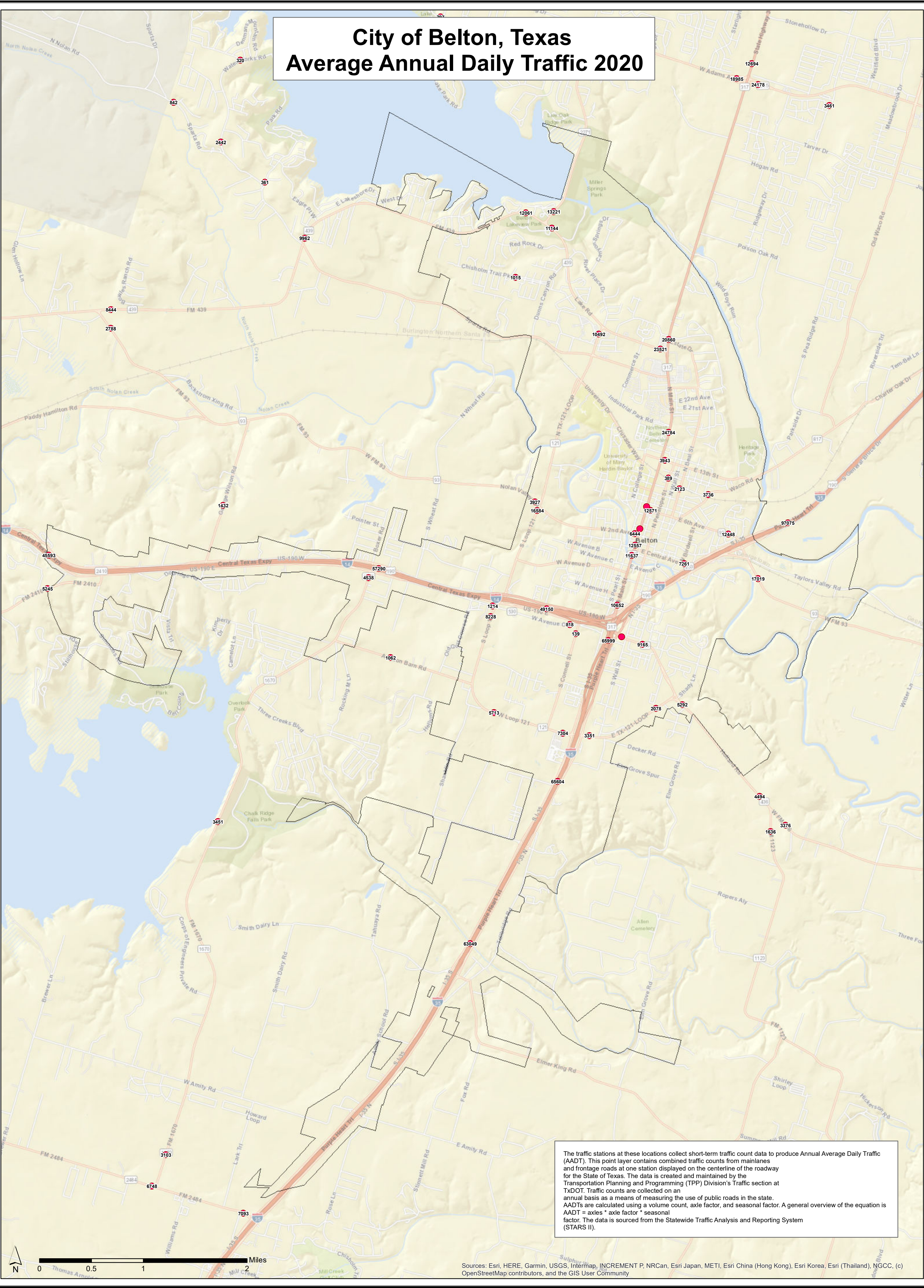
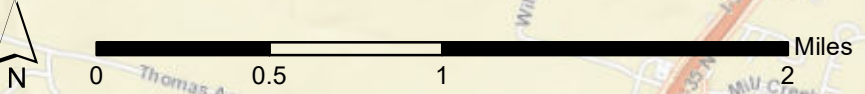


# City of Belton, Texas Average Annual Daily Traffic 2020



The traffic stations at these locations collect short-term traffic count data to produce Annual Average Daily Traffic (AADT). This point layer contains combined traffic counts from mainlines and frontage roads at one station displayed on the centerline of the roadway for the State of Texas. The data is created and maintained by the Transportation Planning and Programming (TPP) Division's Traffic section at TxDOT. Traffic counts are collected on an annual basis as a means of measuring the use of public roads in the state. AADTs are calculated using a volume count, axle factor, and seasonal factor. A general overview of the equation is  $AADT = \text{axles} \times \text{axle factor} \times \text{seasonal factor}$ . The data is sourced from the Statewide Traffic Analysis and Reporting System (STARS II).



Sources: Esri, HERE, Garmin, USGS, Intermap, INCREMENT P, NRCan, Esri Japan, METI, Esri China (Hong Kong), Esri Korea, Esri (Thailand), NGCC, (c) OpenStreetMap contributors, and the GIS User Community